



WALL KING™

OWNER'S MANUAL

Pro Dunk® WALL KING

Basketball System

WELCOME TO THE FAMILY OF PRO DUNK® OWNERS



Warning

- ! Do not slide, climb, or play on system.
- ! Keep organic material away from system. Grass, litter, etc. could cause corrosion and /or deterioration.
- ! Check system twice a year for signs of corrosion (rust, pitting, and chipping). Remove rust and/or loose paint completely and repaint with exterior enamel paint. If rust has penetrated through the steel anywhere, replace parts immediately.
- ! Check unit before each use for loose hardware, excessive wear, and signs of corrosion and repair before using.
- ! During play, use extreme caution to keep players face away from the backboard, rim, and net.
- ! Wear a mouth guard when playing to avoid dental injuries.
- ! When adjusting height, keep hands and fingers away from moving parts.
- ! During play, do not wear jewelry (rings, watches, necklaces, etc.). Objects may entangle in net.

Thank you for purchasing our basketball system. We try hard to ensure that our products are of high quality and free of manufacturing defects and of missing parts. However, if you have any problems with your basketball pole, such as a manufacturing defect or a missing part please contact us at the following:

Toll Free: 1.888.600.8545

Pro Dunk®

Web: www.produnk.com

22047 Lutheran Church Rd.

Tomball, TX 77377

Please provide model number, serial number, and/or part number of the product and/or part when you call, write or email. These numbers can be found on the product, packaging, or on the back of the main pole.

Purchase Parts: www.produnk.com/parts

Support: www.produnk.com/support

Installation Video: <https://www.produnk.com/support/videos.php?id=diQJ0XzHTv0>

Read this manual all the way through before starting to install your system. Then read each step completely before beginning installation. Ensure you understand each step fully and comply with all steps for a safe installation.

Bill Of Materials

No.	Description	Qty.			
1	Wall Bracket	1	29	16mm Flat Washer	8
2	Upper Extension Arm	1	30	12mm Flat Washer	16
3	Lower Extension Arm	1	31	10mm Flat Washer	14
4	Backboard	1	32	10mm Flat Washer	12
5	Rim	1	33	10mm Lock Washer	4
6	Rim Cover Plate (Packaged With Rim)	1	34	Safety Cable Clip	1
7	Actuator	1	35	Safety Cable Mounting Bracket	1
8	Upper Actuator Arm	2	36	Steel Safety Cable	2
9	Lower Actuator Arm	2	37	10mm Nylon Hex Locknut	7
10	Steel Height Meter	1	38	Masonry Drill Bit	1
11	Actuator Handle	1	39	Wood Drill Bit	1
12	Backboard Connection Bracket	2	40	Height Sticker	1
13	Rear Wall Support Bracket	4			
14	Actuator Steel Sleeve	1			
15	Plastic and Steel Rim Spacer	4			
16	16mm x 58cm Hex Bolt	1			
17	16mm x 52cm Hex Bolt	1			
18	16mm x 13cm Hex Bolt	2			
19	12mm x 8mm Hex Bolt	2			
20	12mm x 7mm Hex Bolt	4			
21	12mm x 3.5cm Hex Bolt	2			
22	10mm x 35cm Hex Bolt	6			
23	10mm x 35cm Eye Bolt	1			
24	10mm x 7cm Hex Bolt (Packaged With Rim)	4			
25	6mm x Phillips Bolt (Packaged With Rim)	2			
26	16mm Nylon Hex Locknut	4			
27	12mm Nylon Hex Locknut	8			
28	10mm Hex Nut	4			

Safety Instructions



IMPORTANT

It is the responsibility of purchaser to ensure that all installers and players fully comply with the detailed instructions set forth in this product installation manual. Product assembly should be carried out exactly as instructed and owner supervision of use and installation is required to prevent risk of product malfunction or risk injury.

- All tools used to assemble this product should be used in compliance with manufacturer's guidelines.
- Installation of this product will require heavy lifting and bending. Any person that is not capable of such activity should not participate in the installation of this product.
- If using a ladder during assemble, use extreme caution and refer to the warnings and cautions on the ladder.
- Due to the size and weight of this product, we recommend at least (4) competent adults are present.
- Make sure there are no overhead power lines within a 25 foot radius of the basketball system.
- All parts and components necessary to complete proper installation are included within this product. Do not use parts not included with our system. Failure to follow this requirement could cause product malfunction and will void warranty of this product.
- Keep all organic materials away from parts and components to avoid corrosion.
- Do not Dunk or Hang on your system.
- Do not climb on any part of the basketball system as it was not intended for this activity.
- The owner is responsible for ensuring the wall or structure the system is mounted to is structurally sound and capable of supporting the stress of the system. Contact a professional engineer evaluate your structure beforehand.

- Do not use the basketball system as a lift or to hoist anything.
- Players should wear protective mouth guard during play to avoid any time of dental injury.
- Players should refrain from wearing any jewelry that could potentially get caught in the rim or net.
- Do not allow children to adjust basketball system.
- Check the basketball system on a regular basis to ensure that there are no signs of deterioration or corrosion, loose hardware, or damaged parts. If you see any signs of damage perform maintenance or contact Pro Dunk® for replacement.
- For maintenance repairs please contact a professional.
- During installation be sure the wall is clear of any type of utilities (wires, gas lines, water lines, etc..)
- Be sure you have safe access to the rear side of the wall to complete the installation.
- **Failure to follow these safety instructions could result in product malfunction, serious injury, or even death.**

Pro Dunk® retains the right to modify this document at any time without notice or obligation.

Keep this installation manual as a reference for your safety and the safety of those playing on the basketball system. Additional copies of these safety instructions are available by calling customer service at **1.888.600.8545** or at **www.produnk.com/support**

Installation Overview

In order to have the safest, fun and longest use of your Pro Dunk® system, please note and heed the following:

- 1) Prior to goal assembly, ensure the structure the system is being mounted to is structurally sound and capable of supporting the system. We recommend contacting an engineer to evaluate to structure as well.
- 2) Installation requires full access to the rear side of the structure.
- 3) Immediately unpack all components and cross check against bill of materials. Report any shortages to Hoops Inc. customer service at 1.888.600.8545.
- 4) Parts can be ordered at www.produnk.com/parts
- 5) For safety measures, have at least 4 capable persons to assist you in assembly of your system.

Wall King Installation Video



<https://www.produnk.com/support/videos.php?id=diQJ0XzHTv0>

Required Tools

- Power Drill (Hammer drill for brick and stone)
- 2 Adjustable Wrenches
- #2 Phillips Screw Driver
- 2 8ft Ladders
- Level
- Pencil
- Tape Measure

Socket/Wrench Sizes Recommended
<ul style="list-style-type: none">• 24mm• 22mm• 17mm



Pro Dunk Accessories

http://www.produnk.com/basketball_goals/accessories/



Why stop playing in the evening. You don't have to! Order the **Pro Dunk Goal Light LED**. It easily lights up the entire 3-point line with 2 powerful LED lamps extending play into the night. **There's always time for one more game!**

[patent pending 62458721]

Comes with **Free Shipping!**



[Goal Light LED!](http://produnk.com/video/goal_light_led.html)

produnk.com/video/goal_light_led.html



Need a dedicated net or lighting for your court. Our **Boundary Netting** has got you covered. This accessory is fully customizable and is a standalone net, light, and/or flag. Below is a link to our builder. Customize your court!

Comes with **Free Shipping!**



[Dedicated Net](http://produnk.com/video/boundary_netting.html)

produnk.com/video/boundary_netting.html



Haven't you always wanted your playing area to have regulation striping like a real basketball court. Well now you can with the **Court Marking Stencil Kit**. Just lay it out on your court and applied the included white paint. **Includes the key with side markings, freethrow, and the entire 3-point line.** Fully reusable and a great family DIY project.

Comes with **Free Shipping!**



[Court Marking Stencil](http://produnk.com/video/court_marking_stencil_kit.html)

produnk.com/video/court_marking_stencil_kit.html



Looking to light up your court from multiple locations? The **Pole Light LED** can be mounted anywhere and will light up your entire court. You can have multiple sources of light to cancel out any shadows during play and truly bring the gym experience home! This even has a flag option to put up your favorite flag and fly it proud!

Comes with **Free Shipping!**



[Pole Light LED](http://produnk.com/video/pole_light_led.html)

produnk.com/video/pole_light_led.html

Installation

1) Installation Location

Choose the proper location to mount your Wall King system. Use the diagram to the left to make sure your bracket is high enough to be adjusted up to 10ft. If you install your bracket higher than 86 inches your system will still adjust to 10ft but will not adjust down as far. If you install your bracket below 86 inches your system will not adjust up to 10ft.

The wall surface needs to be level and flat so that your bracket will be level. The wall must either be wood siding, brick, or stone and be structurally sound.

Ensure that the structure you are mounting to is structurally sound and sufficient to handle the stresses of the Wall King. Contact a professional engineer regarding this.

Above your bracket you need an additional 6 - 16 inches for the safety cable to attach to the wall (16 inches being optimal).

You must have full access to the rear side of the wall to complete the installation.

Before moving on confirm you have read and understand all safety instructions on page 3.

The overhang is 3ft from the wall to the front of the backboard.

2) Marking and Drilling Bracket Mounting Holes

Using a pencil, mark the 2 top mounting holes, 2 bottom holes, 2 of the 6 center holes (1 on the left and 1 on the right), and the safety cable eye bolt hole while ensuring the bracket is level. (Total of 7 holes to be drilled)

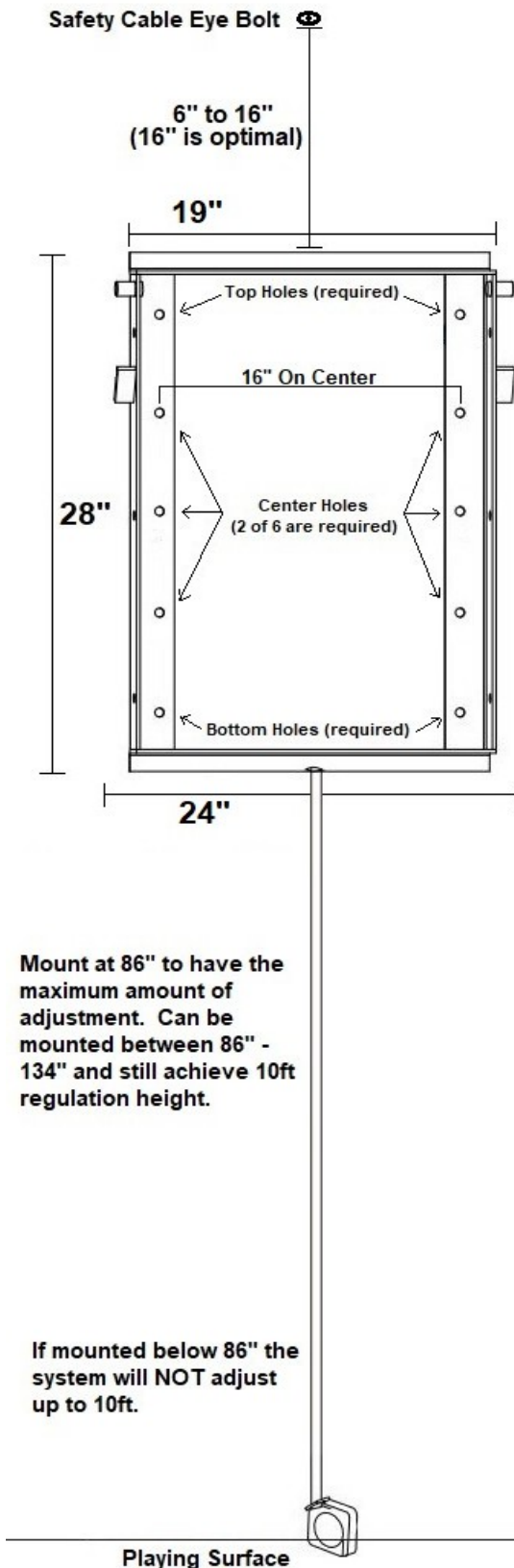
Once marked check the wall to make sure there is nothing in the way of drilling through the wall. Example: electric wiring, steel braces/studs, water lines, gas lines, or anything else.

Brick/Stone Wall:

Next using the provided drill bit(s), drill each hole. Use the #38 masonry drill bit and a hammer drill to go through the brick or stone. Once through the brick or stone switch to the #39 wood drill bit to go through the rest of the wall.

Wood/Siding Wall:

Using the #39 wood drill bit, drill each hole.



3) Bracket Installation

Rear access to the wall is required to mount the wall bracket.

Next install your #1 wall bracket to the wall using the 6 #22 bolts, 12 #31 flat washers, 6 #37 hex nuts, and 3 #13 rear wall support brackets.

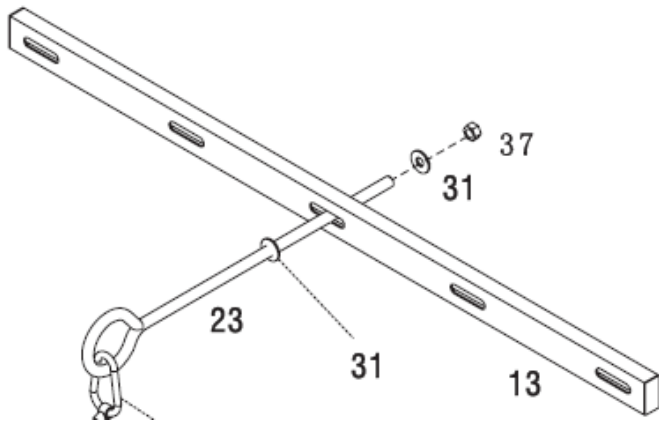
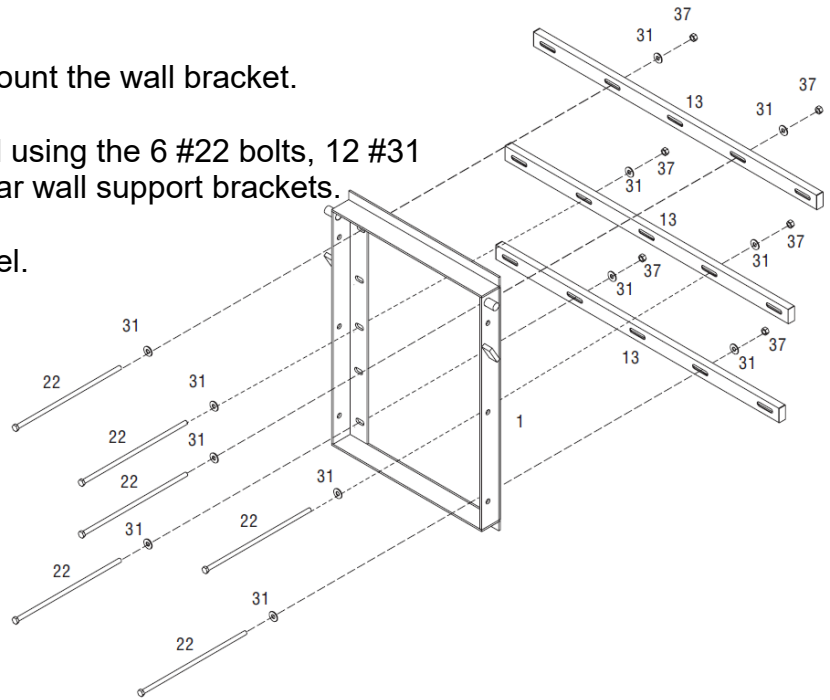
Before tightening make sure bracket is level.

Parts:

- [1] #1 Wall Bracket
- [3] #13 Rear Wall Support Brackets

Hardware:

- [6] #22 10mm x 35cm Hex Bolts
- [12] #31 10mm Flat Washers
- [6] #37 10mm Nylon Hex Locknut



4) Safety Eye Bolt

Install your safety eye bolt through your wall.

Parts:

- [1] #13 Rear Wall Support Bracket

Hardware:

- [1] #20 12mm x 7cm Eye Bolt
- [2] #31 Flat Washers
- [1] #37 10mm Nylon Hex Locknut

5) Extension Arm Assembly

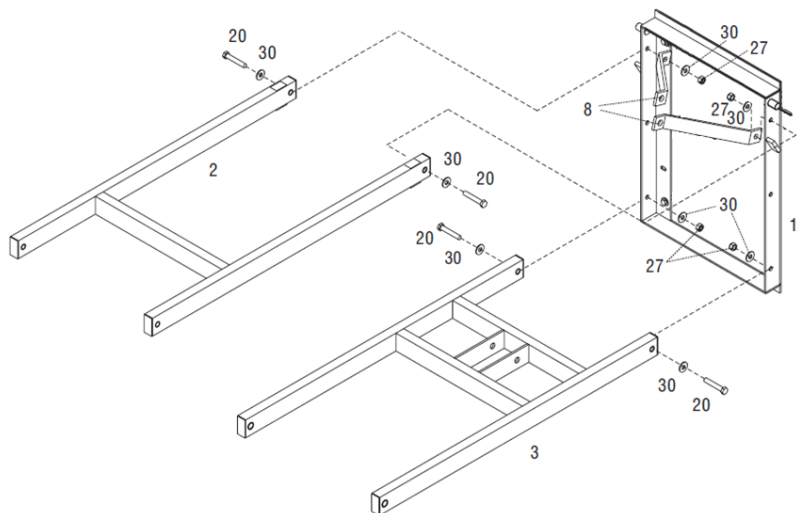
Once your bracket is secured to the wall it is now time to assemble the upper and lower extension arms.

Parts:

- [1] #2 Upper Extension Arm
- [1] #3 Lower Extension Arm
- [2] #8 Upper Actuator Arms

Hardware:

- [4] #20 12mm x 7cm Hex Bolts
- [8] #30 Flat Washers
- [4] #27 12mm Nylon Hex Locknuts



6) Actuator Assembly

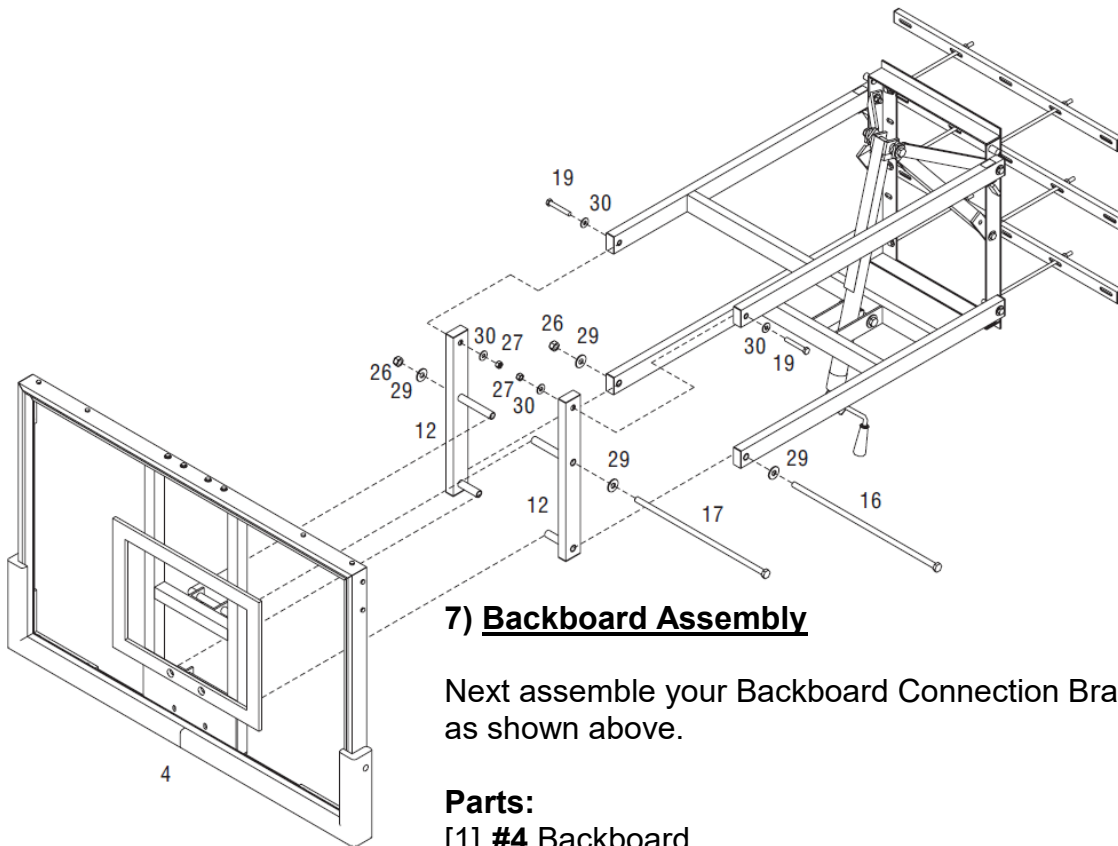
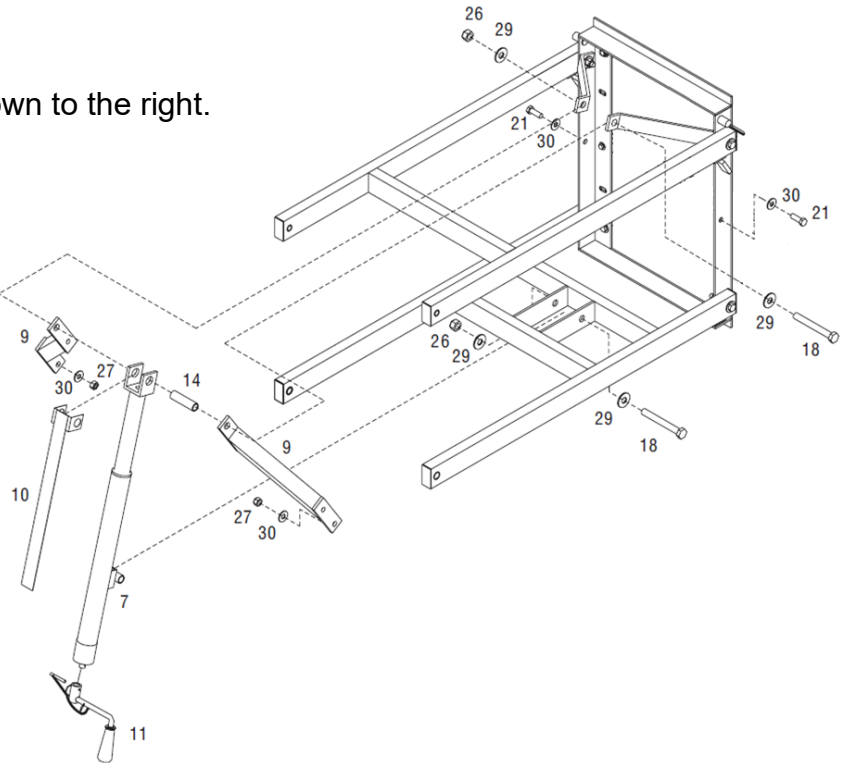
Next assemble your actuator as shown to the right.

Parts:

- [1] **#7** Actuator
- [2] **#9** Lower Actuator Arms
- [1] **#14** Actuator Steel Sleeve
- [1] **#10** Steel Height Meter
- [1] **#11** Actuator Handle

Hardware:

- [2] **#18** 16mm x 13cm Hex Bolts
- [4] **#29** 16mm Flat Washers
- [2] **#26** 16mm Nylon Hex Locknut
- [2] **#21** 12mm x 3.5cm Hex Bolts
- [4] **#30** 12mm Flat Washers
- [2] **#27** 12mm Nylon Hex Locknut



7) Backboard Assembly

Next assemble your Backboard Connection Brackets and backboard as shown above.

Parts:

- [1] **#4** Backboard
- [2] **#12** Backboard Connection Brackets

Hardware:

- [1] **#17** 16mm x 52cm Hex Bolt
- [1] **#16** 16mm x 58cm Hex Bolt
- [4] **#29** 16mm Flat Washers
- [2] **#26** 16mm Nylon Hex Lock-

Hardware Continued:

- [2] **#19** 12mm x 8cm Hex Bolts
- [4] **#30** 12mm Flat Washers
- [2] **#27** 12mm Nylon Hex Locknut



CAUTION: Do not proceed with rim assembly without these spacers!



Install Rim Spacers

<https://www.produnk.com/support/videos.php?>

8) Rim Assembly

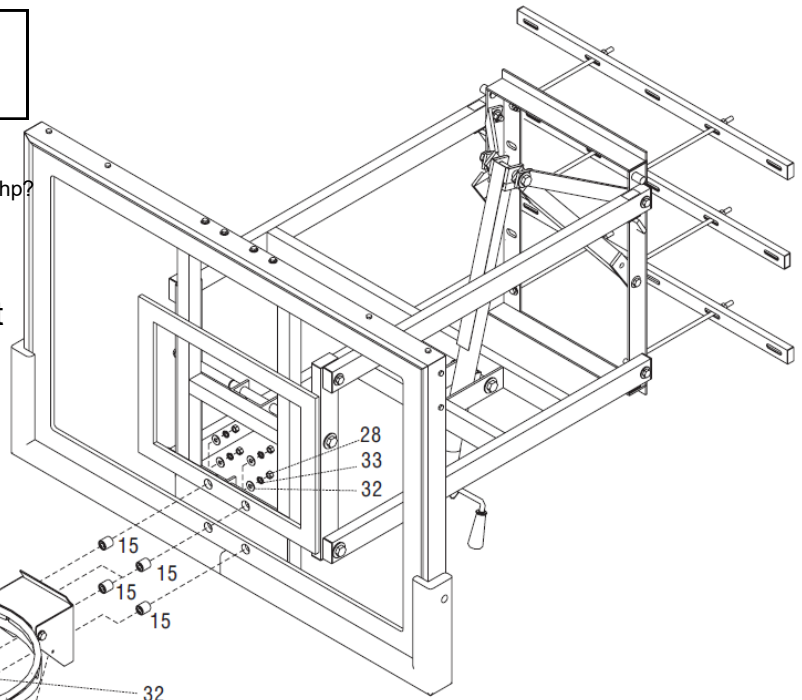
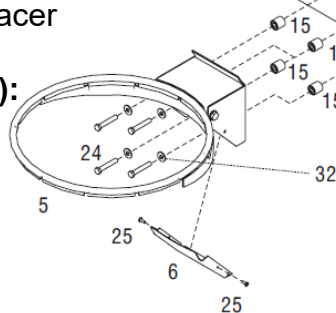
Next assemble your rim as shown to the right and level rim left to right.

Parts:

- [1] #5 Rim
- [1] #6 Rim Cover Plate (Packaged With Rim)
- [4] #15 Plastic and Steel Rim Spacer

Hardware (Packaged With Rim):

- [4] #24 10mm x 7cm Hex Bolts
- [8] #32 10mm Flat Washers
- [4] #33 10mm Lock Washer
- [4] #28 10mm Hex Nut
- [2] #25 6mm Phillips Bolt



Make sure all hardware on the system is tightened at this point.

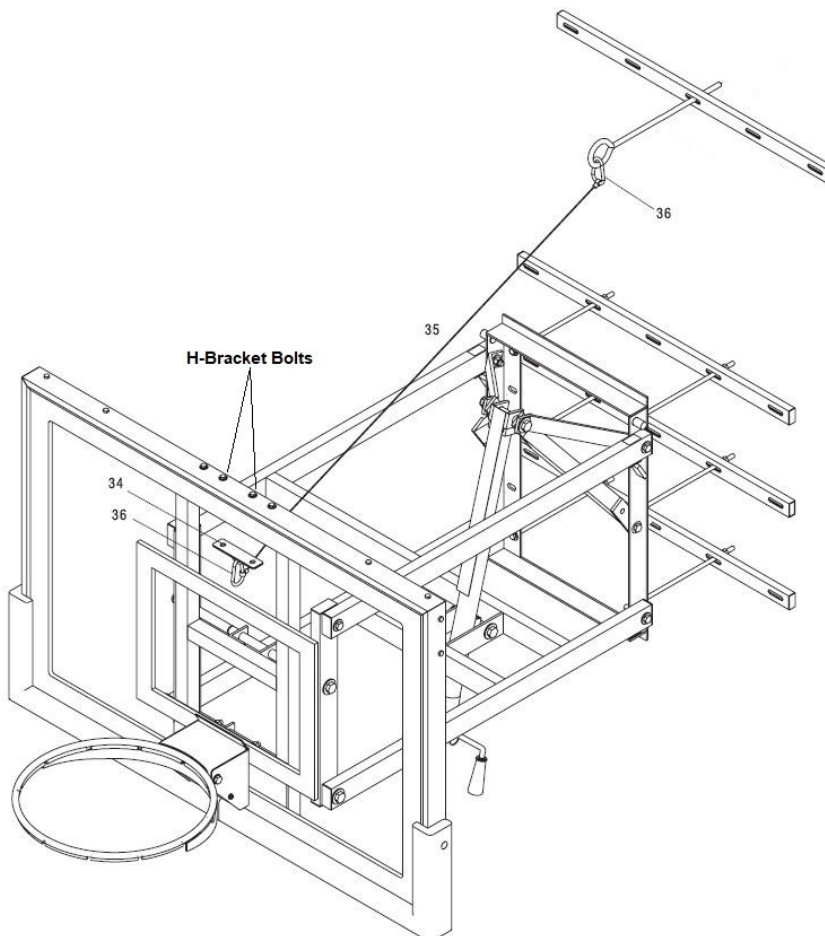
9) Safety Cable Assembly

Next assemble the #34 Safety Cable Mounting Bracket to your Backboard. Loosen the 2 H-Bracket bolts and install the #34 Safety Cable Mounting Bracket to the top of the backboard as shown.

Once secured connect the #35 Steel Safety Cable using the 2 #36 Safety Cable Clips as shown.

Parts:

- [1] #34 Safety Cable Mounting Bracket
- [2] #36 Safety Cable Clips
- [1] #35 Steel Safety Cable



10) Height Sticker Assembly

To apply the #40 Height Sticker, first use a tape measure to crank rim up to exactly 10' from the playing surface. This is measured from the top of the rim to the playing area. Then apply your #40 Height Sticker to the actuator where the #10 Height Meter is pointing at 10ft exactly. Your system is now calibrated and you will have a general idea of what height the system is at while adjusting it up and down.

Please remember if you did not mount your bracket at exactly 86" you will not have the full range of adjustment and will need to understand the limitations. You can reference Step 1 or give our support staff a call if you have any questions.

11) Routine System Inspection and Safety Before Play

Before each use inspect the entire system for any signs of loose nuts and bolts, any excessive wear and tear, any signs of rust or corrosion.

If replacement parts are needed you can contact Pro Dunk® directly or navigate to www.produnk.com/parts to purchase parts for your system. Only parts provided by Pro Dunk® should be used for repair. Not doing so could cause the system to fail resulting in injury or death and voids the limited lifetime warranty.

Be sure you and all players have read and fully understand all safety warnings on page 3. DO NOT DUNK OR HANG ON THIS BASKETBALL SYSTEM.

12) Maintenance

Like any piece of hardware proper maintenance is required. Several factors such as the environment, organic materials, herbicides, pesticides, excessive use or misuse can eventually cause the basketball system to require maintenance. Failure to do so could result in system failure, property damage, or even personal injury.

- 1) All organic materials should be kept away from the system at all times. This will alleviate any chance of rust penetrating the powder coated finish and causing structural damage.

Examples: grass clippings, moisture, garbage, dirt, etc.

- 2) If you see any signs of rust on the system remove the loose paint, sand the area with a media grit sandpaper and apply outdoor enamel to the affected area.

Suggested Touchup Paint: Rustoleum Semi-Gloss Black Enamel

- 3) To clean the backboard use a 100% cotton soft cloth with mild dishwashing liquid for soap and luke warm water. Rinse backboard with lukewarm water. Wash gently with a 100% Cotton soft cloth, lukewarm water and mild soap. Do not scrub. Rinse backboard with lukewarm water again. Dry with 100% cotton soft cloth. To minimize scratches and minor abrasions to your backboard

- 4) Never adjust the rim outside the adjustment range based on your installation. Adjustments of the goal should be done under adult supervision.

- 5) If installed in a public area it is suggested to remove the adjustment handle.

- 6) Replace Net Video—  [Replace Net
https://www.produnk.com/support/videos.php?id=-Llue54A4cs](https://www.produnk.com/support/videos.php?id=-Llue54A4cs)

1-13-2022

Hoops Inc. Pro Dunk® WALL KING Limited 5 Year Warranty

Hoops Pro Dunk® WALL KING basketball structural components are warranted to the original purchaser to be free from defects in material or workmanship for the duration of ownership by the original retail purchaser. The word "defects" is defined as imperfections that impair the use of the product.

Warranty Fulfillment

Merchandise must be shipped prepaid with a copy of proof of purchase to Hoops Inc. for examination to see whether it needs to be repaired or replaced. Any labor costs, travel expenses and any other changes involved in the removal, installation or replacement of the defective/repared parts from/to your Hoops Pro Dunk® WALL KING system will be your (the purchaser's) responsibility. Shipping charges for replaced or warranted merchandise being sent back to the customer must be prepaid by the customer in advance. If not, the replacement shipment will be sent out collect.

Hoops Inc. reserves the right to examine photographs or physical evidence of merchandise claimed to be defective, and to recover said merchandise, prior to authorization of warranty claims.

What is not covered by this warranty

This warranty does not cover defects or damage due to improper installation, shipping, handling, alteration, accidents, vandalism, weather conditions (rusting), exposure to corrosives, negligence, misuse (anything other than a type of basketball activity or related contact with the unit), scratching, scuffing or any event beyond the control of the Hoops Inc.. If unit is not maintained as stated in the user manual the warranty will be void.

Liability

Hoops Inc. shall not be liable for indirect, special, or consequential damages arising out of or in connection with the use or performance of the products or other damages with respect to any economical loss, loss of property, loss of enjoyment of use, costs of removal, installation or other consequential damages for breach of any expressed or implied warranty on these products. All installations must have a final engineering signoff before use and yearly inspections by a professional certified to do so or specified by the engineer.

Guidelines

Keep your proof of purchase (original retail purchaser). Without it, we will not be able to proceed with any warranty service.

Call

1-888-600-8545 / Warranty Dept.

Write

Hoops Inc.
Attn: Warranty Dept
22047 Lutheran Church Rd.
Tomball TX 77377

Email

support@hoopsincorporated.com

For the most up to date warranty information please navigate to www.produnk.com.