

# OWNER'S MANUAL



## Warning

- ! Do not slide, climb, or play on pole.
- ! Keep organic material away from pole base. Grass, litter, etc. could cause corrosion and /or deterioration.
- ! Check pole system twice a year for signs of corrosion (rust, pitting, and chipping). Remove rust and/or loose paint completely and repaint with exterior enamel paint. If rust has penetrated through the steel anywhere, replace pole immediately.
- ! Check unit before each use for loose hardware, excessive wear, and signs of corrosion and repair before using.
- ! During play, use extreme caution to keep players face away from the backboard, rim, and net.
- ! Wear a mouth guard when playing to avoid dental injuries.
- ! When adjusting height, keep hands and fingers away from moving parts.
- ! During play, do not wear jewelry (rings, watches, necklaces, etc.). Objects may entangle in net.



## Heavyweight™

### Basketball System

## WELCOME TO THE FAMILY OF HEAVYWEIGHT™ OWNERS

Thank you for purchasing our basketball system. We try hard to ensure that our products are of high quality and free of manufacturing defects and of missing parts. However, if you have any problems with your basketball pole, such as a manufacturing defect or a missing part please contact us at the following:

**Toll Free:** 1.888.679.4576

**Heavyweight™ Hoops**

**Web:** [www.heavyweighthoops.com](http://www.heavyweighthoops.com)

22047 Lutheran Church Rd.

**FAX:** (281) 357-4822

Tomball, TX 77377

Please provide model number, serial number, and/or part number of the product and/or part when you call, write or email. These numbers can be found on the product, packaging, or on the back of the main pole.

**Support:** [www.heavyweighthoops.com](http://www.heavyweighthoops.com)

**Support:** [www.heavyweighthoops.com/support](http://www.heavyweighthoops.com/support)

**Installation Video:** [www.heavyweighthoops.com/support/install.php](http://www.heavyweighthoops.com/support/install.php)

***Read this manual all the way through before starting to put up your system. Then read each step completely before beginning installation.***



**Know what's below.  
Call before you dig.**

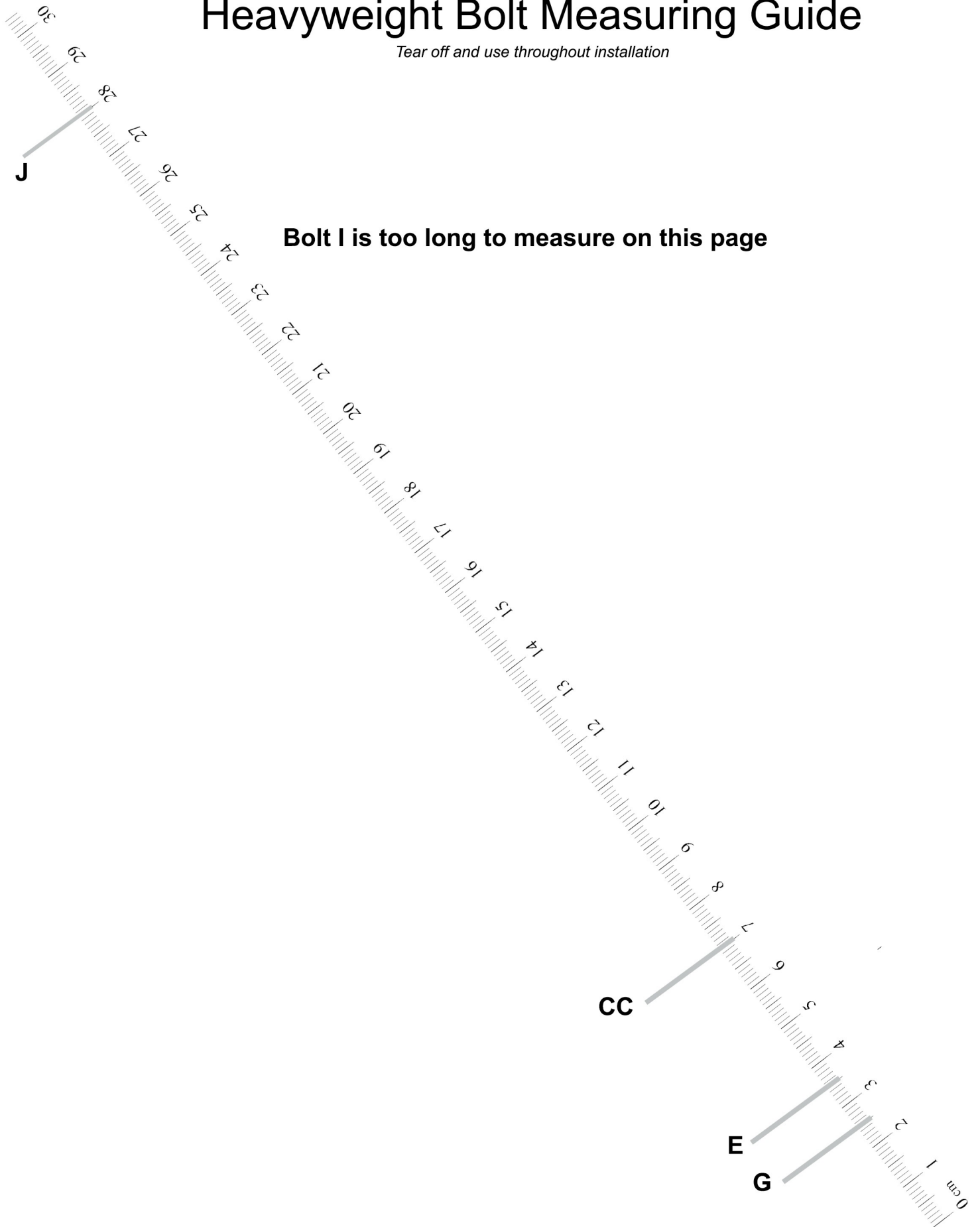
**[www.Call811.com](http://www.Call811.com)**

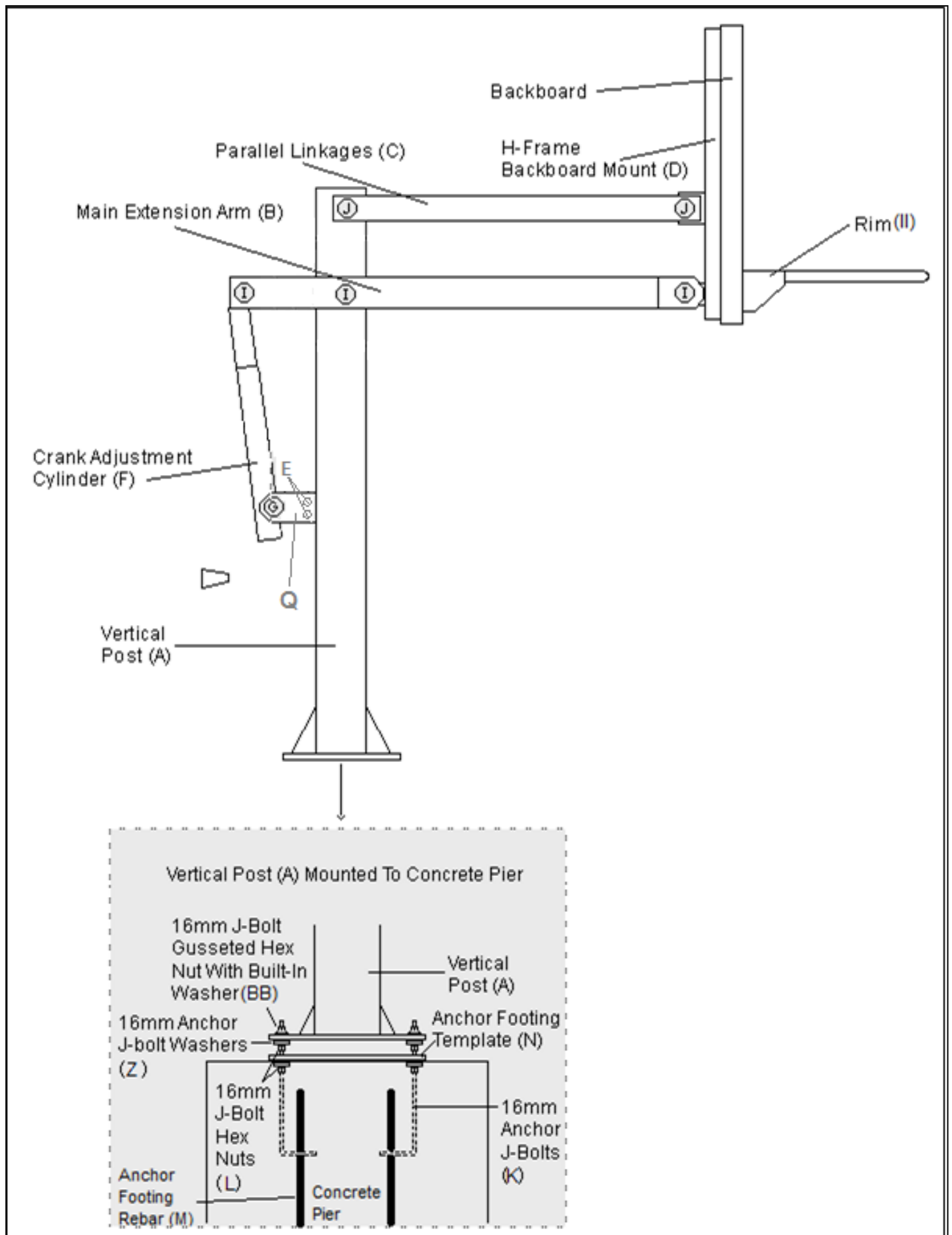
# Bill Of Materials

Ref.	Qty.	Description
A	1	Vertical Post
B	1	Main Extension Arm
C	2	Parallel Linkages
D	1	H-Frame Backboard Mount (pre-assembled to backboard)
E	4	12mm x 3.5cm Hex Bolt
F	1	Crank Adjustment Cylinder
G	2	12mm x 2.5cm Hex Bolt
H	10	12mm Flat Washers
I	3	16mm X 31cm Hex Bolt
J	2	16mm X 28cm Hex Bolt
K	4	16mm Anchor J-Bolts (needed for day 1)
L	8	16mm J-Bolt Hex Nuts (needed for day 1)
M	4	Anchor Footing Rebars (needed for day 1)
N	1	Anchor Footing Template (needed for day 1)
O	5	16mm Lock Nuts
P	4	12mm Lock Nuts
Q	2	Main Pole Crank Ears
R	8	10mm X 3cm Hex Bolts (pre-assembled)
S	8	10mm Flatwashers (pre-assembled)
T	8	10mm Lockwashers (pre-assembled)
U	8	10mm Hex Nuts (pre-assembled)
V	1	Rim Height Sticker
W	4	Plastic and Steel Rim Spacers (for the rim assembly)
Z	8	16mm Anchor J-bolt Washers
AA	1	Black Safety Rod And Pin
BB	4	16mm J-Bolt Gusseted Hex Nuts With Built-In Washer
CC	4	10mm X 7cm Hex Bolts (for the rim assembly)
DD	8	10mm Flatwashers (for the rim assembly)
EE	4	10mm Lockwashers (for the rim assembly)
FF	2	Rim Plate Screws (for the rim assembly)
GG	1	Metal Rim Plate (for the rim assembly)
HH	1	White Mesh Net (for the rim assembly)
II	1	Rim (for the rim assembly)
JJ	4	Rim Shim Washers (optional)
KK	4	10mm Hex Nuts (for the rim assembly)

# Heavyweight Bolt Measuring Guide

*Tear off and use throughout installation*





# Safety Instructions



## IMPORTANT

It is the responsibility of purchaser to ensure that all installers and players fully comply with the detailed instructions set forth in this product installation manual. Product assembly should be carried out exactly as instructed and owner supervision of use and installation is required to prevent risk of product malfunction or risk injury.

- All tools used to assemble this product should be used in compliance with manufacturer's guidelines.
- Installation of this product will require heavy lifting and bending. Any person that is not capable of such activity should not participate in the installation of this product.
- If using a ladder during assemble, use extreme caution and refer to the warnings and cautions on the ladder.
- Due to the size and weight of this product, we recommend at least (4) competent adults are present.
- Before digging the hole for the anchor system, please call 811 to ensure that all underground utilities are a safe distance away from the anchor system.
- Make sure there are no overhead power lines within a 25 foot radius of the basketball system.
- All parts and components necessary to complete proper installation are included within this product. Do not use parts not included with our system. Failure to follow this requirement could cause product malfunction and will void warranty of this product.
- Keep all organic materials away from parts and components to avoid corrosion.
- Please use caution when performing Slam Dunks on your Heavyweight™ system.
- Do not climb on any part of the basketball system as it was not intended for this activity.

- Do not use the basketball system as a lift or to hoist anything.
- Players should wear protective mouth guard during play to avoid any time of dental injury.
- Players should refrain from wearing any jewelry that could potentially get caught in the rim or net.
- Only hang on the rim momentarily to regain your balance. Release the rim as soon as possible.
- Do not allow children to adjust basketball system.
- Check the basketball system on a regular basis to ensure that there are no signs of deterioration or corrosion, loose hardware, or damaged parts. If you see any signs of damage perform maintenance or contact Heavyweight™ Hoops for replacement.
- For maintenance repairs please contact a professional.
- **Failure to follow these safety instructions could result in product malfunction, serious injury, or even death.**

Heavyweight™ Hoops retains the right to modify this document at any time without notice or obligation.

Keep this installation manual as a reference for your safety and the safety of those playing on the basketball system. Additional copies of these safety instructions are available by calling customer service at **1.888.679.4576** or at **[www.heavyweighthoops.com](http://www.heavyweighthoops.com)**

# Installation Overview

In order to have the safest, fun and longest use of your Heavyweight™ system, please note and heed the following:

- 1) Prior to goal assembly, call utility services (811) for location of underground utility lines before you dig.
- 2) Immediately unpack all components and cross check against bill of materials. Report any shortages to Heavyweight™ Hoops customer service at 1.888.679.4576.
- 3) Parts can be ordered at [www.heavyweighthoops.com](http://www.heavyweighthoops.com)
- 4) Assembly is a two part process.

## PART 1

- Day 1.** Complete Anchor System Installation Instructions. (Below)
- Day 2.** Allow concrete to cure.
- Day 3** Allow concrete to cure.
- Day 4.** Allow concrete to cure.

## PART 2

- Day 5.** Complete Heavyweight™ assembly instructions.

- 5) For safety measures, have at least 4 capable persons to assist you in assembly of your Heavyweight™ Goal.



**Know what's below.  
Call before you dig.**

**[www.Call811.com](http://www.Call811.com)**

**White**—Proposed Excavation

**Pink**—Temporary Survey Markings

**Red**—Electric Power Lines, Cables, Conduit, and Lighting Cables

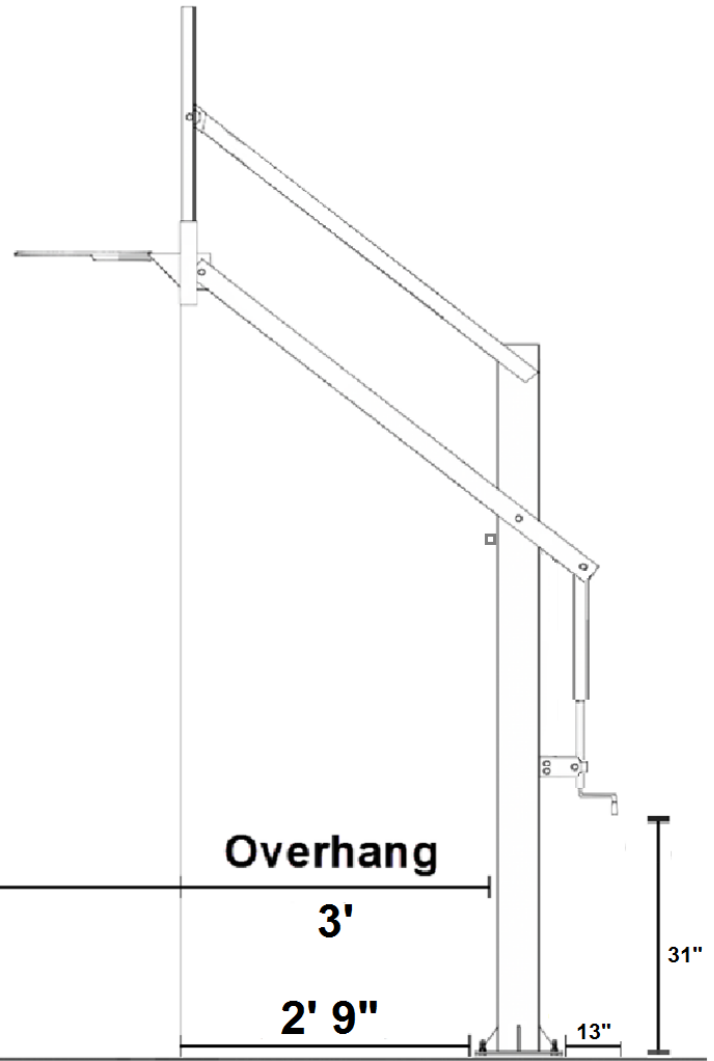
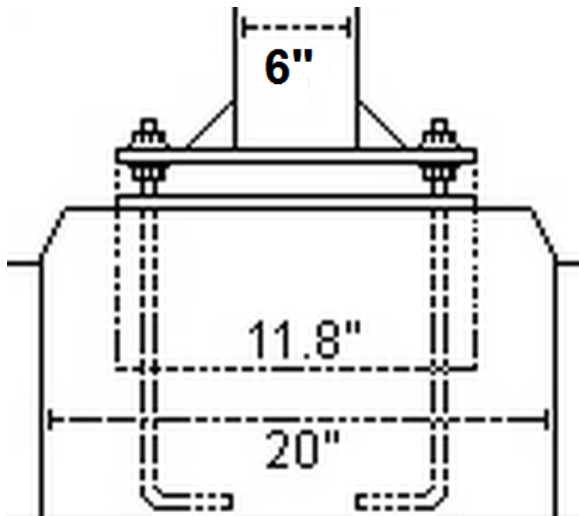
**Yellow**—Gas, Oil, Petroleum, or Gaseous Materials

**Orange**—Communication, Alarm or Signal Lines, Cables or Conduit

**Blue**—Portable Water

**Purple**—Reclaimed Water, Irrigation and Slurry Lines

**Green**—Sewers and Drain Lines



3 Point Line	Distance to Free Throw Line	Overhang
6'	15'	3'
		2' 9"

## Required Tools

- Post Hole Digger
- Shovel
- Wheel Barrow
- (15-20) 80 lbs. bags of concrete OR (20-27) 60 lbs. bags of concrete
- Garden Hose
- Trowel
- Level
- Tape Measure
- Box Cutter
- (2) Large Crescent Wrenches (main bolts and pier)
- #2 Phillips Screw Driver
- (2) 8ft A-Frame Ladders
- Pencil

### Socket/Wrench Sizes Recommended

- 24mm
- 19mm
- 17mm



# Installation Video

Navigate to be below URL to watch our installation video.

<https://www.heavyweighthoops.com/support/install.php>

Installation of a Heavyweight™ 60 basketball goal system by an experienced professional assembly crew. It shows the two step process starting with the pier installation followed by assembly of the basketball goal on the cured pier. Tips and explanation is given throughout by the experts at [www.heavyweighthoops.com](http://www.heavyweighthoops.com).



<https://www.heavyweighthoops.com/support/install.php>





# Accessories

[https://www.produnkhoops.com/basketball\\_goals/accessories](https://www.produnkhoops.com/basketball_goals/accessories)



Why stop playing in the evening. You don't have to! Order the **Pro Dunk Goal Light LED**. It easily lights up the entire 3-point line with 2 powerful LED lamps extending play into the night. **There's always time for one more game!**

[patent pending 62458721]

Comes with **Free Shipping!**



[Goal Light LED!](#)

[produnkhoops.com/video/goal\\_light\\_led.html](https://produnkhoops.com/video/goal_light_led.html)



Catch run away balls from going behind your basketball goal with the **Pro Dunk Backstop Net**. A custom fitted 10.5 feet wide by 7.5 feet tall durable outdoor net stops and rebounds balls back into your driveway.

Comes with **Free Shipping!**



[Backstop Net](#)

[produnkhoops.com/video/backstop\\_net.html](https://produnkhoops.com/video/backstop_net.html)



Haven't you always wanted your playing area to have regulation striping like a real basketball court. Well now you can with the **Court Marking Stencil Kit**. Just lay it out on your court and applied the included white paint. **Includes the key with side markings, freethrow, and the entire 3-point line.** Fully reusable and a great family DIY project.

Comes with **Free Shipping!**



[Court Marking Stencil](#)

[produnkhoops.com/video/court\\_marking\\_stencil\\_kit.html](https://produnkhoops.com/video/court_marking_stencil_kit.html)



Customize your pole padding with anything you can think of including family, NBA, college, high school, church or school names. Made of high quality outdoor 3M vinyl. Solid white characters are pre-spaced on transfer paper for easy application to your pole padding.

Comes with **Free Shipping!**



[Custom Pole Pad Lettering](#)

[produnkhoops.com/video/pole\\_pad\\_lettering.html](https://produnkhoops.com/video/pole_pad_lettering.html)

# Day 1

## ANCHOR SYSTEM INSTALLATION INSTRUCTIONS



### WARNING

Before digging the hole for this pole, check for buried power, gas, water, and telecommunication lines! Failure to do so could result in serious or fatal injury! Contact your local utility company if unsure.

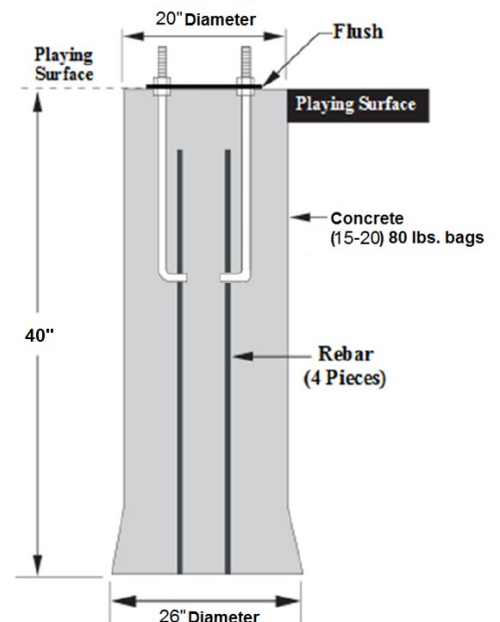
### 1) Installation Location

Choose the proper location to dig for the concrete footing. Use the distance chart on the previous page to help you make your decision. When choosing the exact position to dig, make sure to maximize the amount of playing surface while minimizing possible driveway obstruction.

### 2) Digging Pier Hole

Dig hole 40" deep and 20" square. Be sure to bell out the bottom of the hole 26" to give added stability to the footing.

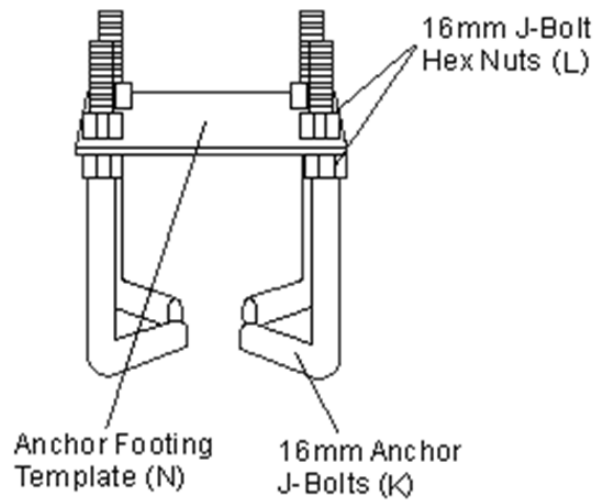
**NOTE:** If you live in an area where the frost line is below 40" it is advisable to dig to normal frost line.



### 3) Anchor Assembly

Twist (4) nuts (L) to the bottom of threads on (4) J-bolts (K). Place these J-bolts through the holes on the black anchor plate (N) and install (4) nuts (L) and tighten. The bottom of the J-bolts should be positioned as shown.

**NOTE:** There will be (8) flat washers (Z) and (4) gusseted hex nuts (BB) left over after the Anchor Assembly. These will be used on the Assembly Day. You can set them to the side for now.



### 4) Pouring Concrete and Setting Pier Kit



For this step you will need: level, broomstick and tape measure. The 40" x 20" anchor footing will require a little over a 1/2 yard of 3000 psi concrete (15-20 80 pound sacks of premix concrete). More will be needed if you dig a larger hole.

**NOTE:** Make certain that you have enough concrete to finish the job. Allowing a portion to dry while you purchase more concrete will weaken the footing.

Mix (15-20) 80 lbs. bags of concrete in wheel barrow or cement mixer and pour in pre-dug hole about half full. Agitate concrete with shovel or broomstick to ensure proper fill. Place (4) Pieces of No. 4 rebar (M) (included) in the middle of the hole about 8 inches apart to create a square in the middle of the hole. All 4 pieces of rebar need to overlap the J-bolts at least 6 inches.

**NOTE:** Mix concrete to manufacture specifications.





Pour the remaining concrete into the hole until completely full and coming out of the top. Using a trowel, smooth the concrete to your preferred liking.



**NOTE:** The top of the concrete needs to be **level with or higher than your playing area** to ensure your system will adjust to 10ft regulation height.

Place the assembled anchor system in hole to the point where the bottom of the black anchor plate (N) is flush with the top of the finished concrete.

**NOTE:** The (4) 16mm J-Bolt Hex Nuts (L) on the bottom of the Anchor Footing Template (N) will be sacrificed into the concrete.

Use the level to ensure that the pier anchor template (L) it is level in all directions. Additionally, the center line of the 16mm Anchor J-Bolts (K) must be parallel with the edge of the playing surface.



Once completely smooth let the concrete cure. This can take up to a week. Consult the instructions on the concrete bag for curing times and directions.

**Day 1 Complete!**

# Day ~5

## HEAVYWEIGHT™ ASSEMBLY INSTRUCTIONS



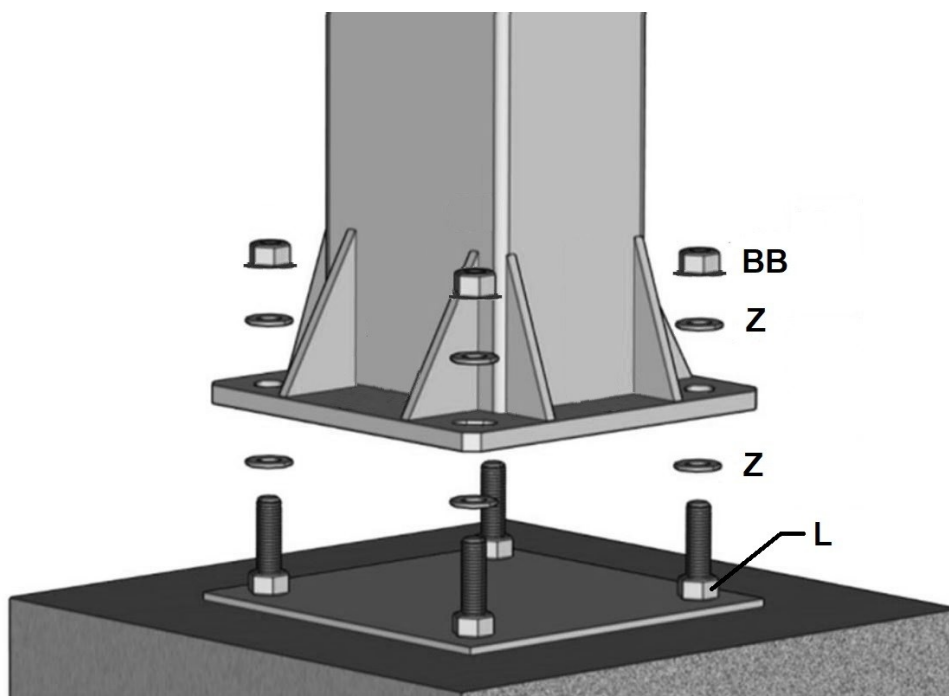
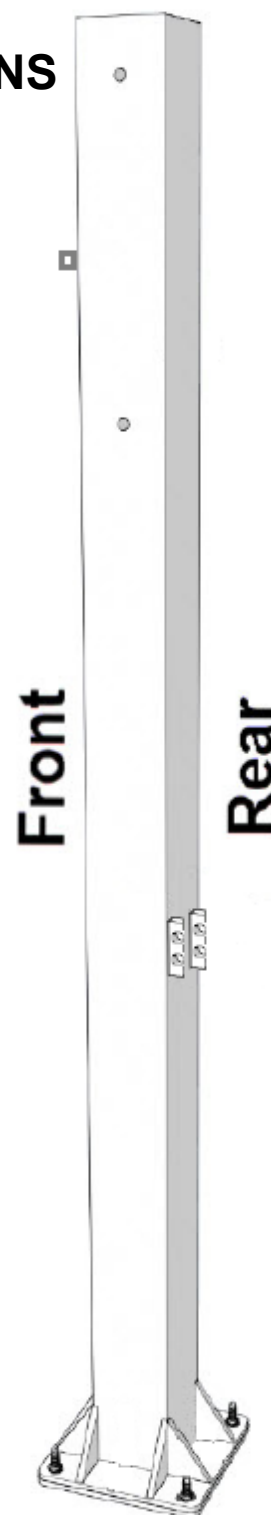
### CAUTION!

FOUR PEOPLE ARE RECOMMENDED FOR  
SAFE INSTALLATION OF THE SYSTEM

### 5) Main Pole Assembly

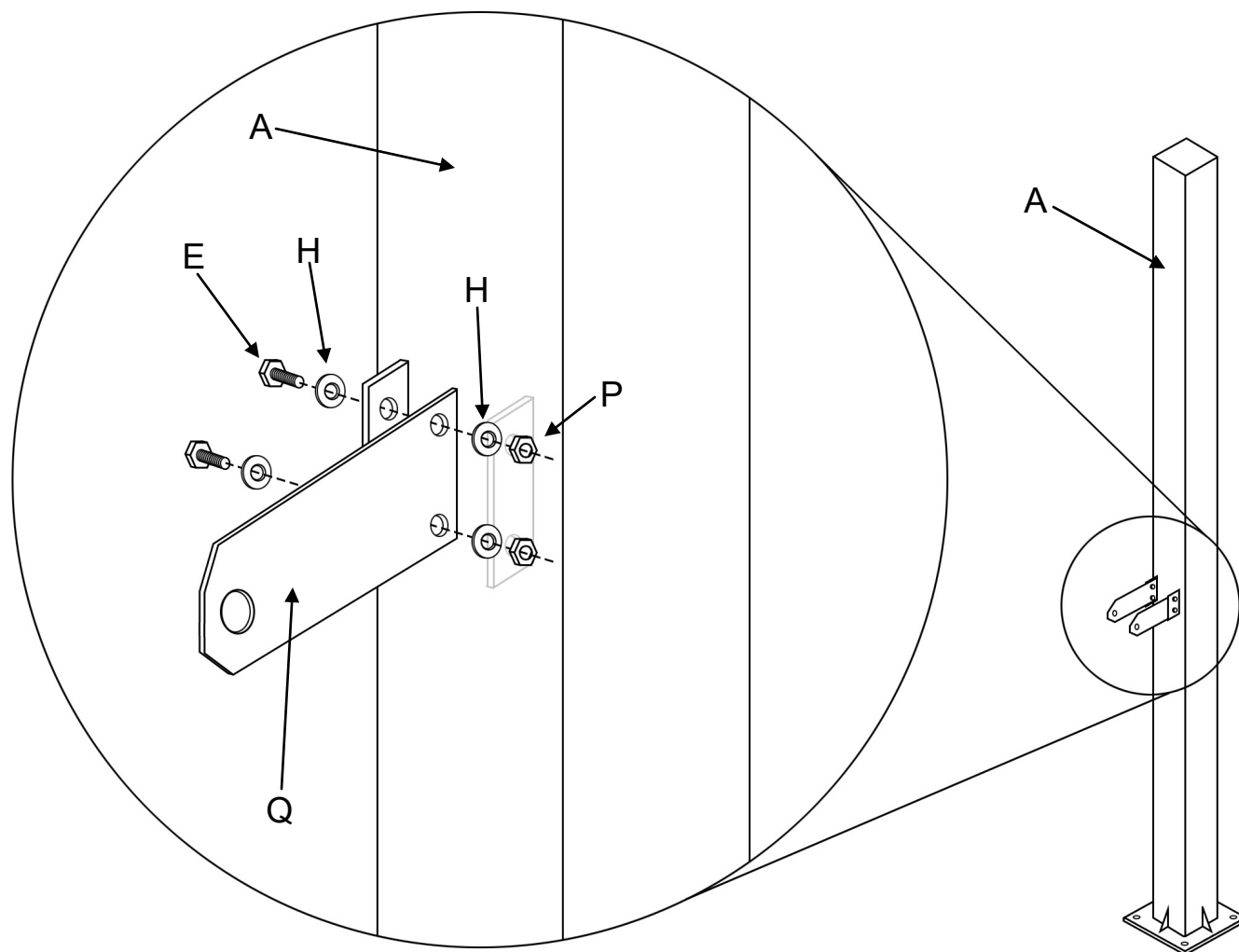
Loosen the top four 16mm J-Bolt Hex Nuts (L) from the 16mm Anchor J-Bolts (K). Level all four 16mm J-Bolt Hex Nuts (L). Leave Anchor Footing Template (N) in place.

Install (4) metal washers (Z) on top of the anchor bolts (K). Install the main pole (A) show to the right. Install (4) metal washers (Z) to top of the anchor bolts (K). Install (4) flanged hex nuts (BB) to top of the anchor bolts and tighten down. **Make sure that base plate is square to playing surface.**



## 6) Main Pole Ears Assembly

Using four 12mm x 3.5cm Hex Bolts (E), eight 12mm flat washers (H), and four 12mm Hex Nuts (P) attach the two Main Pole Crank Ears (Q) as shown below.

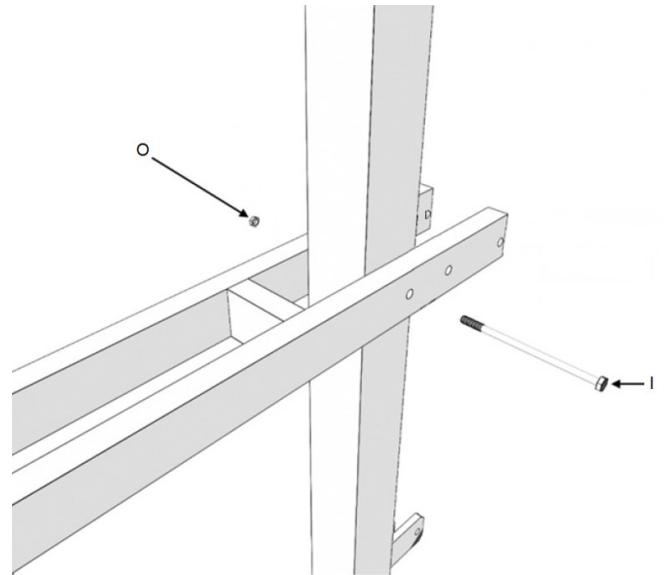




## 7) Main Extension Arm Assembly

Slide the Main Extension Arm (B) over the top of the Vertical Post (A) and attach to the lower pivot tube with a 16mm X 33cm Hex Bolt (I) and a 16mm Lock Nut (O).

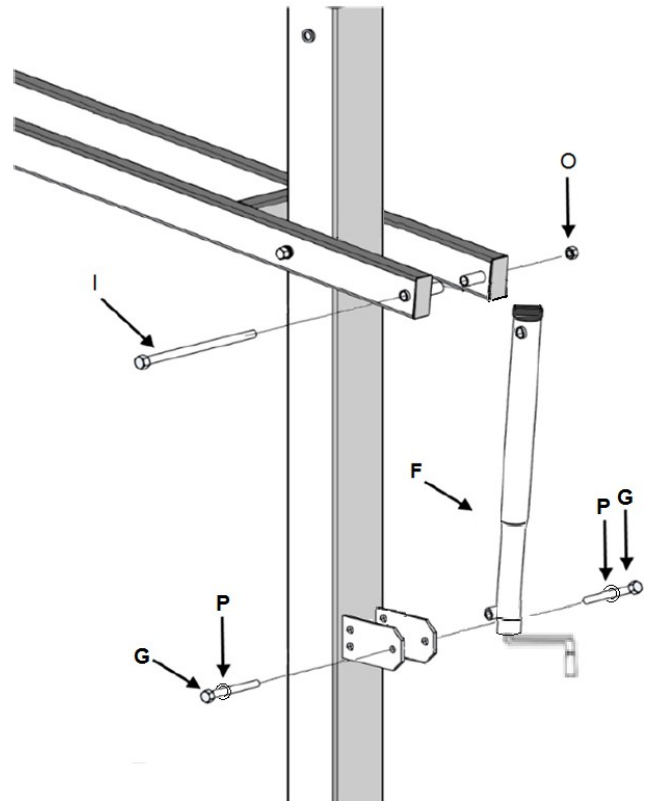
**NOTE:** Tighten the lock nut (O) down and then back off a 1/4 turn to allow the joint to pivot when adjusting the system up and down.



## 8) Actuator Assembly

Next attach the Crank Adjustment Cylinder (F) using an 16mm X 31cm Hex Bolt (I) at the top and two 12mm X 2.5cm Hex Bolts (G) and two 12mm Flat Washers (P) at the bottom. Tighten (I) with a 16mm Lock Nut (O).


**NOTE:** Tighten the lock nut (O) down and then back off a 1/4 turn to allow the joint to pivot when adjusting the system up and down.



## 9) Upper Linkage Assembly

Attach Parallel Linkages (C) to Vertical Post (A) with a 16mm X 28cm Hex Bolt (J) and a 16mm Lock Nut (O).

**NOTE:** It does not matter which end of the parallel link you attach to the vertical post.

 **CAUTION:** Injury may occur if linkages are allowed to fall off main arm during assembly

**NOTE:** Tighten the lock nut down and then back off a 1/4 turn to allow the joint to pivot when adjusting the system up and down.



## 10) Backboard Assembly

**⚠ CAUTION:** ATTACHING THE BACKBOARD REQUIRES AT LEAST FOUR CAPABLE ADULTS.

Mount the H-Frame Backboard Mount (D) and Backboard assembly lower pivot tube first to the Main Extension Arm (B) using one 16mm X 33cm Hex Bolt (I) and one 16mm Lock Nut (O). Next, attach the upper H-Frame Backboard Mount (D) pivot tube to the Parallel Linkages (C) using one 16mm X 30cm Hex Bolt (J) and one 16mm Lock Nut (O).

**NOTE:** Tighten the lock nuts down and then back off a 1/4 turn to allow the joint to pivot when adjusting the system up and down.



---

## 11) Level Backboard

Check face of backboard to see if it is level forward and back. If it is not level, correct it by adjusting the 16mm J-Bolt Hex Nuts (L) located underneath the Vertical Post (A) flanged base plate.



## 12) Rim Spacers Assembly

Prior to installing the rim, locate four Plastic and Steel Spacers (W). Insert them into four rim holes in the backboard. This is very important to prevent backboard breakage.

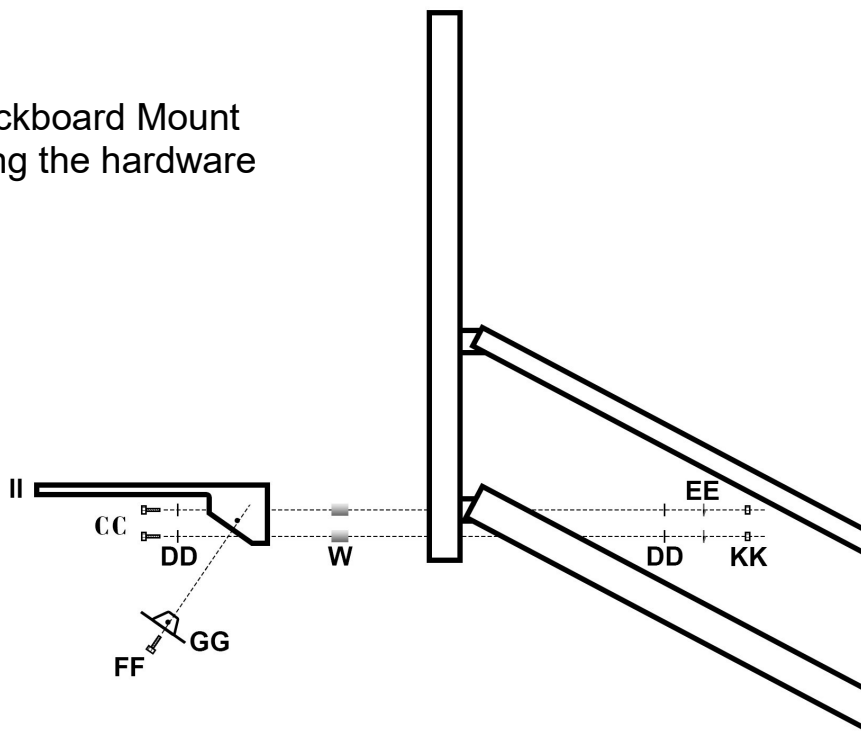


**CAUTION:** Do not proceed with rim installation without these spacers!



## 13) Rim Assembly

Mount the rim to the H-Frame Backboard Mount (D) and Backboard assembly using the hardware supplied in the rim box.





**NOTE:** Use a level to make sure rim is level side to side before tightening nuts

**OPTIONAL:** If desired, you can level the rim front to back using shim washers placed between the rim spacer (W) and Rim (II).



Using (2) Rim Plate Screws (FF) attach the Metal Rim Plate (GG) to the rim (II). The Metal Rim Plate (GG) covers the springs in the Rim (II) as shown below.



Make sure all nuts on the system have been tightened.

**NOTE:** Do not over tighten. If unit is excessively difficult to crank up and down the 16mm Lock Nut (O) that secures the Main Extension Arm (B) and Vertical Post (A) is probably too tight.

## 14) Height Sticker Assembly

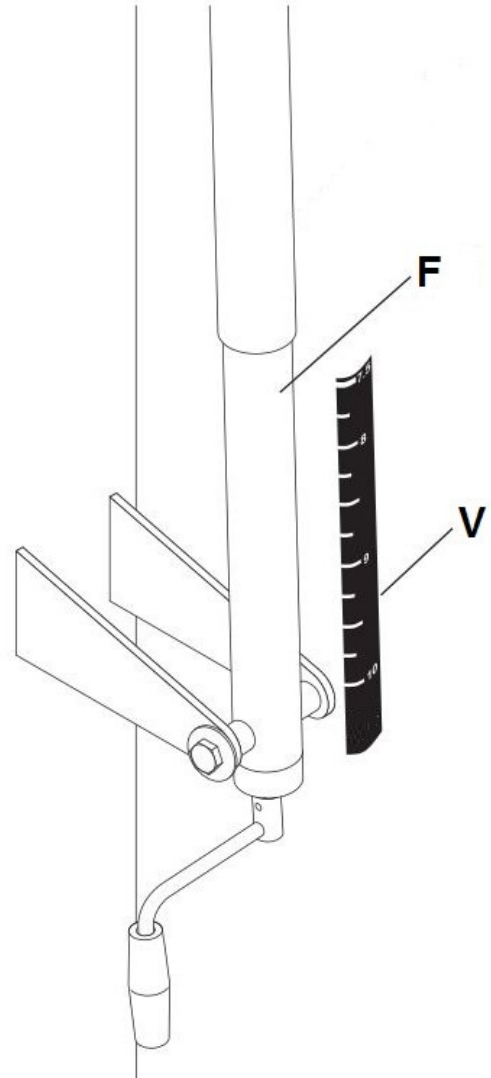
To apply the Rim Height Sticker (V), first use a tape measure to crank rim up to exactly 10' from the playing surface. This is measured from the top of the rim to the playing area.

Using a pencil mark where the plastic sleeve ends on the crank cylinder. This is now your 10ft mark which will guide you while attaching the Rim Height Sticker (V).

Crank your system back down to its lowest height. Stop once you start to feel resistance on the crank.

Stick the Rim Height Sticker (V) to the side or back of the crank cylinder as seen to the right lining up the 10ft mark on the bottom to your pencil mark.

**NOTE:** *It is advisable to wait up to two weeks to allow the anchor footing to fully cure before aggressive play.*



## 15) Protective Padding Assembly

Attach gusset padding if removed during installation. Attach using the Velcro on the back of the gusset padding to secure it to the base of the system.

Attach pole padding if removed during installation. Attach using the Velcro on the back of the pole padding to secure it to the main pole of the system.



## 16) Maintenance

Like any piece of hardware proper maintenance is required. Several factors such as the environment, organic materials, herbicides, pesticides, excessive use or misuse can eventually cause the basketball system to require maintenance. Failure to do so could result in system failure, property damage, or even personal injury.

- 1) All organic materials should be kept away from the system at all times. This will alleviate any chance of rust penetrating the powder coated finish and causing structural damage.

**Examples:** grass clippings, moisture, garbage, dirt, etc.

- 2) If you see any signs of rust on the system remove the loose paint, sand the area with a media grit sandpaper and apply outdoor enamel to the affected area.

**Suggested Touchup Paint:** Rustoleum Semi-Gloss Black Enamel

- 3) To clean the backboard use a 100% cotton soft cloth with mild dishwashing liquid for soap and luke warm water. Rinse backboard with lukewarm water. Wash gently with a 100% Cotton soft cloth, lukewarm water and mild soap. Do not scrub. Rinse backboard with lukewarm water again. Dry with 100% cotton soft cloth. To minimize scratches and minor abrasions to your backboard

- 4) Never adjust the rim below 7' 6" or over 10'. Adjustments of the goal should be done under adult supervision. When attempting to slam dunk you should always wear a mouth guard to avoid dental injury.

- 5) Replace Net Video—  [Replace Net](https://produnkhoops.com/video/rim_net_replacement.html)  
produnkhoops.com/video/rim\_net\_replacement.html

---

## 17) Routine System Inspection

Before each use inspect the entire system for any signs of Loose nuts and bolts, any excessive wear and tear, any signs of rust or corrosion.

If replacement parts are needed you can contact Heavyweight™ Hoops directly or navigate to [www.heavyweighthoops.com](http://www.heavyweighthoops.com) to purchase parts for your system. Only parts provided by Heavyweight™ Hoops should be used for repair. Not doing so could cause the system to fail resulting in injury or death and voids the limited lifetime warranty.

## Hoops Inc. Heavyweight™ Limited Lifetime Warranty

Hoops Heavyweight™ basketball structural components are warranted to the original purchaser to be free from defects in material or workmanship for the duration of ownership by the original retail purchaser. The word “defects” is defined as imperfections that impair the use of the product.

### Warranty Fulfillment

Merchandise must be shipped prepaid with a copy of proof of purchase to Hoops Inc. for examination to see whether it needs to be repaired or replaced. Any labor costs, travel expenses and any other changes involved in the removal, installation or replacement of the defective/repaired parts from/to your Heavyweight™ system will be your (the purchaser's) responsibility. Shipping charges for replaced or warranted merchandise being sent back to the customer must be prepaid by the customer in advance. If not, the replacement shipment will be sent out collect. Hoops Inc. reserves the right to examine photographs or physical evidence of merchandise claimed to be defective, and to recover said merchandise, prior to authorization of warranty claims.

### What is not covered by this warranty

This warranty does not cover defects or damage due to improper installation, shipping, handling, alteration, accidents, vandalism, weather conditions (rusting), exposure to corrosives, negligence, misuse (anything other than a type of basketball activity or related contact with the unit), scratching, scuffing or any event beyond the control of the Hoops Inc.. If unit is not maintained as stated in the user manual the warranty will be void.

### Liability

Hoops Inc. shall not be liable for indirect, special, or consequential damages arising out of or in connection with the use or performance of the products or other damages with respect to any economical loss, loss of property, loss of enjoyment of use, costs of removal, installation or other consequential damages for breach of any expressed or implied warranty on these products.

### Guidelines

Keep your proof of purchase (original retail purchaser). Without it, we will not be able to proceed with any warranty service.

Call 1.888.679.4576

1-888-679-4576 / Warranty Dept.

Write

Hoops Inc.  
Attn: Warranty Dept  
22047 Lutheran Church Rd.  
Tomball TX 77377

Email

[support@hoopsincorporated.com](mailto:support@hoopsincorporated.com)

For the most up to date warranty information please navigate to [www.heavyweighthoops.com](http://www.heavyweighthoops.com).